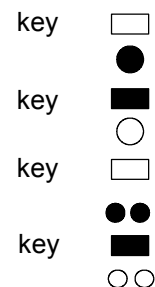
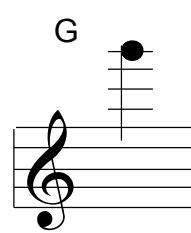
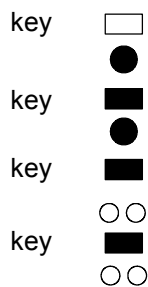
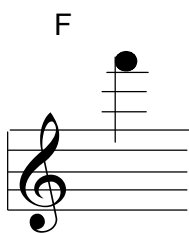
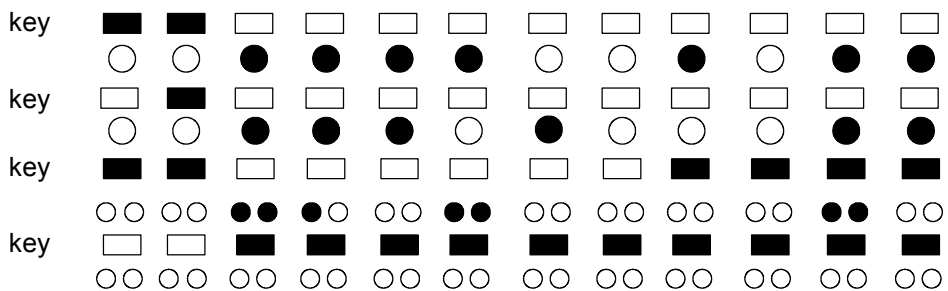
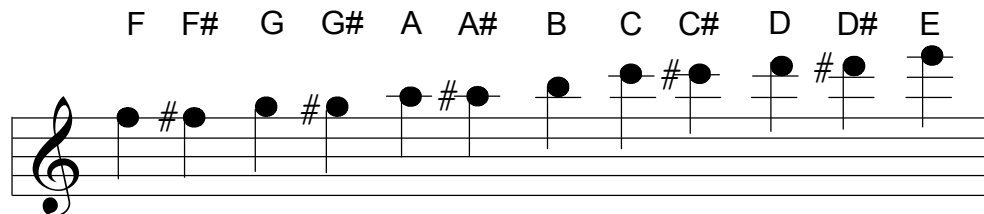
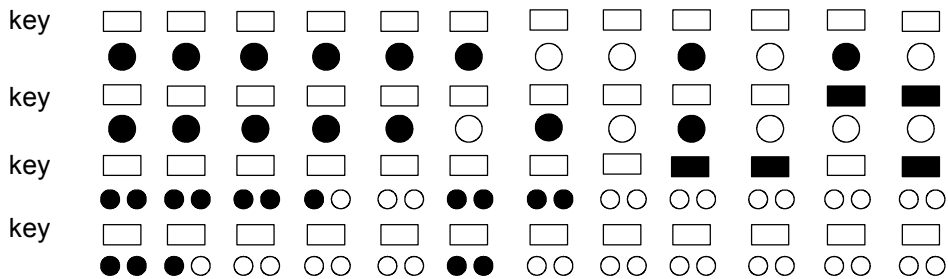
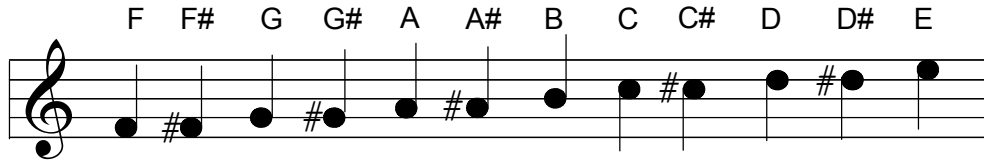


FINGERING FOR THE GOLD SERIES TREBLE RECORDER FOR THE RIGHT HAND



High F sharp fingering is the same as for high G but the recorder bell is closed with the knee.
High D sharp (finger 3) and top F (finger 2) use the key bar as well as a covered hole..

Key: White Circle - Finger hole uncovered	Black Circle - Finger hole covered
White Rectangle - Key uncovered	Black Rectangle - Key depressed